



AI in Cybersecurity and in Network Traffic Prediction

UC Labs

Communications Department, ETTI, UTC-N

virgil.dobrota@com.utcluj.ro

daniel.zinca@com.utcluj.ro

robert.botez@com.utcluj.ro

<https://users.utcluj.ro/~uclabs/>



Research team and areas

Virgil DOBROTĂ
Daniel ZINCA
Iustin-Alexandru IVANCIU
Robert-Diner BOTEZ

Dan-Andrei MARGIN
Alin-Tudor SFERLE

Research Areas:

1. Network Traffic Analysis and Prediction

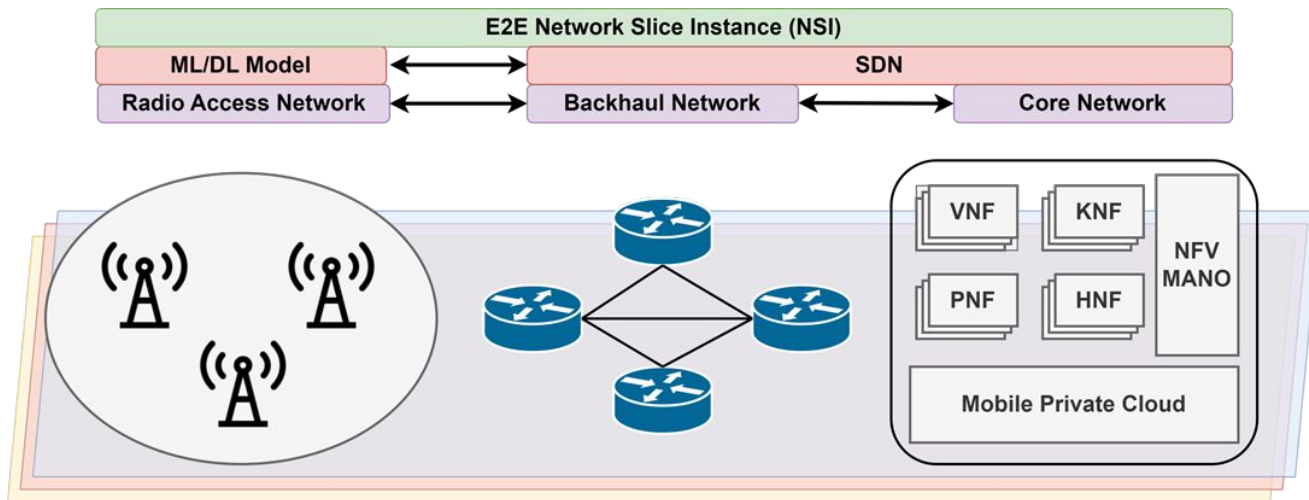
2. Cybersecurity



LAN traffic **Analysis**

LAN traffic **Prediction** using ML / AI

5G/B5G/6G traffic **Prediction** using ML / AI





ML/ AI in Cybersecurity

Spam email / phishing detection

Intrusion detection

Detect applications/protocols in encrypted traffic

DNS tunneling and exfiltration detection

Log analysis

GANs (Generative Adversarial Networks) applications in Cybersecurity





Collaboration inquiry/offer

Open for **research collaborations** and **joint research proposals** on
Cybersecurity / Network Traffic Prediction

